



Control
Automation
Distribution

BMS System & Energy-as-a-Service Business Profile

The cleanest energy is the energy we don't use



Control
Automation
Distribution

ABOUT QTM GROUP AND CAD CO.,LTD



QTM Energy Services Pty Ltd

Established 2012 in Dubai, United Arab Emirates, QTM operates as an Energy-as-a-Service (EaaS) enterprise, that delivers substantial energy efficiency gains within the building sector. With over 200 implemented projects that spans over a decade, QTM is a reliable collaborator with major real estate brands across the Middle East, Australia and Romania for delivering financials savings on utility costs.



CAD Supply Co., Ltd

Founded in 2009, CAD Supply is an authorized distributor of **Honeywell (US)** in Vietnam. CAD specializes in providing solutions for Electric Control Automation, Process Thermal and Gas safety for factories and buildings, including DCS, SCADA, PLC, control panels, and Building Management Systems (BMS).

With the business philosophy of "Customer benefits as the foundation for technological innovation," CAD is committed to delivering high-quality solutions and the best customer service.

CAD Supply Co., Ltd



Control
Automation
Distribution

CAD SUPPLY, founded in 2009, boasts a team of experts with over 15 years of technical experience in the following 4 business divisions:

1. Factory & Building Electric Control Automation:

DCS, Scada, PLC, Control panel. BMS System.

2. Process Thermal Solution: Combustion system for

Furnace, Oven, Dryer, Boiler

3. Safety Solutions: Fire & Gas detectors, Heat

detectors, Early warning Smoke detection system, Visual & Audible Alarms equipment, Electric explosion proof solutions

4. Flow control equipment: Pump, Valve & Field

Instrument



Ha Noi branch:

Address: Room 1108, Women Association Building, 7 Ton That Thuyet Str, Dich Vong Hau Ward, Cau Giay district, Ha Noi, Viet Nam.



Ho Chi Minh City Head office:

Address: 108/25 Cong Hoa street, Ward 4, Tan Binh district, HCM City, Viet Nam

CERTIFICATE OF APPOINTMENT AS AN AUTHORIZED PARTNER IN BMS FIELD



Control
Automation
Distribution

Honeywell

CERTIFICATE OF APPOINTMENT



This is to certify that

CAD Supply Company Limited
Vietnam

is an **Authorized Partner** of
Honeywell Building Technologies for
Building Management System (BMS)

Valid until 31st December 2025

A handwritten signature in black ink, appearing to read 'SUDIPTO DATTA', written over a horizontal line.

SUDIPTO DATTA
BMS General Manager - ROA





Control
Automation
Distribution

MEET THE CADs MANAGEMENT TEAM



NGUYEN MANH HA
Director



Thao Trinh
Back Office Manager



Le Thanh Nghia
Head of Technical &
Service Department



Tony Nguyen
Business Development
Vice Director



Peter Duong
Project Vice Director



Certificate of Completion

This is to certify that:

DUONG TRAN NHAT TRIEU

Honeywell

BUILDING MANAGEMENT
SYSTEMS

is awarded this Certificate of Completion having successfully achieved a baseline level of proficiency, by completing all of the training and testing requirements for:

Niagara 4 Technical Certification

on: 06/02/2023

Authentication ID: 261972871

CEU: 4.0



TRIDIUM

*Call or email Tridium University with the Authentication ID to confirm the authenticity of this certificate.

TRAINING CERTIFICATE



Control
Automation
Distribution

Honeywell



Honeywell Building Technologies

Training Certificate

This is to acknowledge that

TRAN NGOC QUYNH

Of CAD Supply Company

has successfully completed Honeywell Webs N4 Training

Building Management System

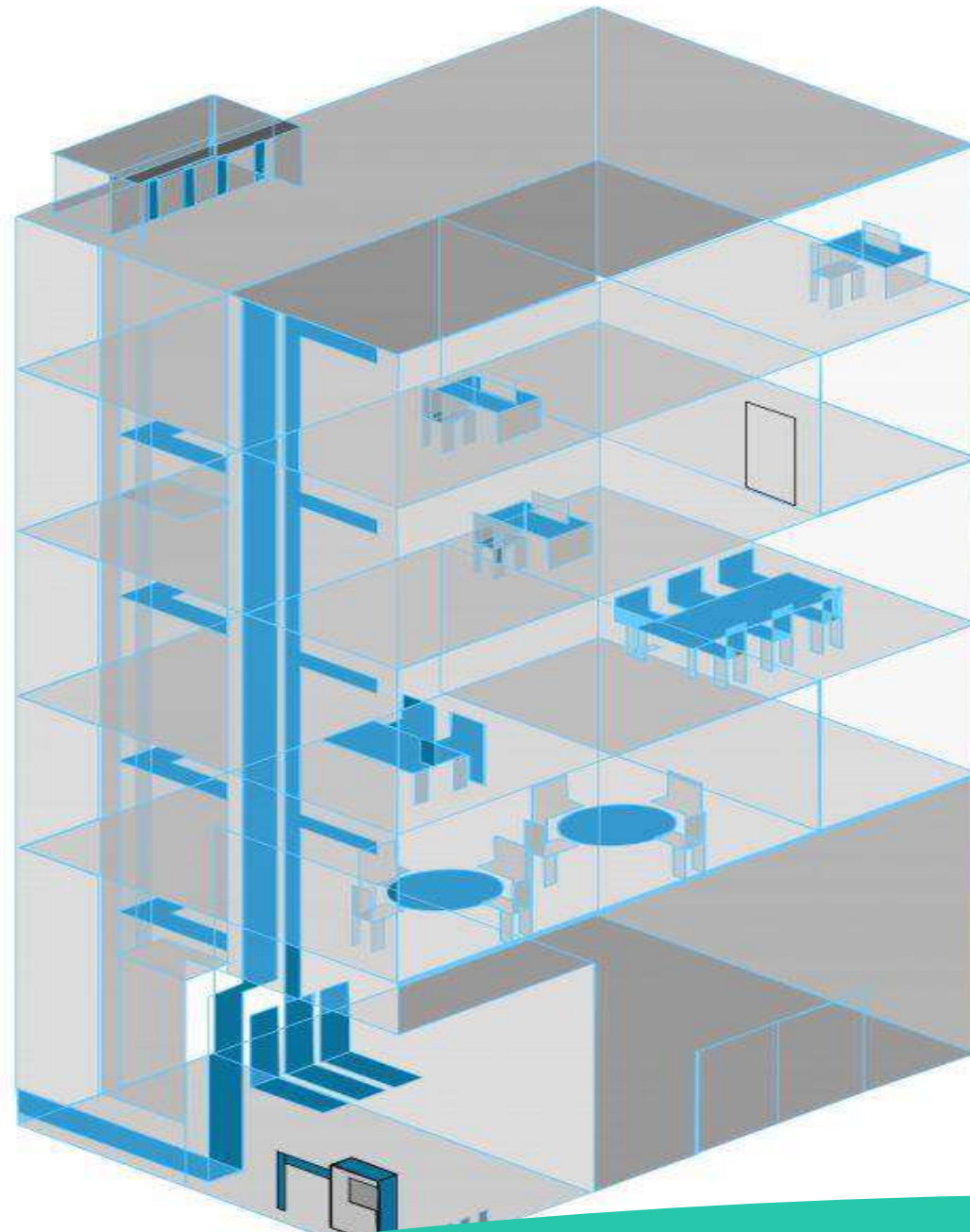
Conducted on 19 –23 Oct. 2020

A handwritten signature in blue ink, appearing to be 'Nguyen Minh Cuong'.

NGUYEN MINH CUONG
Director HBT - Indochina

WEBS-N4™

BUILDING MANAGEMENT SYSTEM



-  Web Based
-  BACNet™ and LonWorks® HVAC controllers
Air Quality and Comfort
-  Lighting Control: Indoor, Outdoor, Signage
-  Security: Access Control and CCTV
-  Wireless, Battery-less Sensing,
Wireless Mesh Networks
-  Energy Management and Metering
-  Multi-Site and Campus Solutions
-  Other Building Systems and Applications -
Elevators, Networked Equipment, Etc.

The best IOT open platform on the market

BMS SYSTEM & ELECTRIC CONTROL AUTOMATION

Why Honeywell BMS WEBs N4?

The best IOT open platform on the market

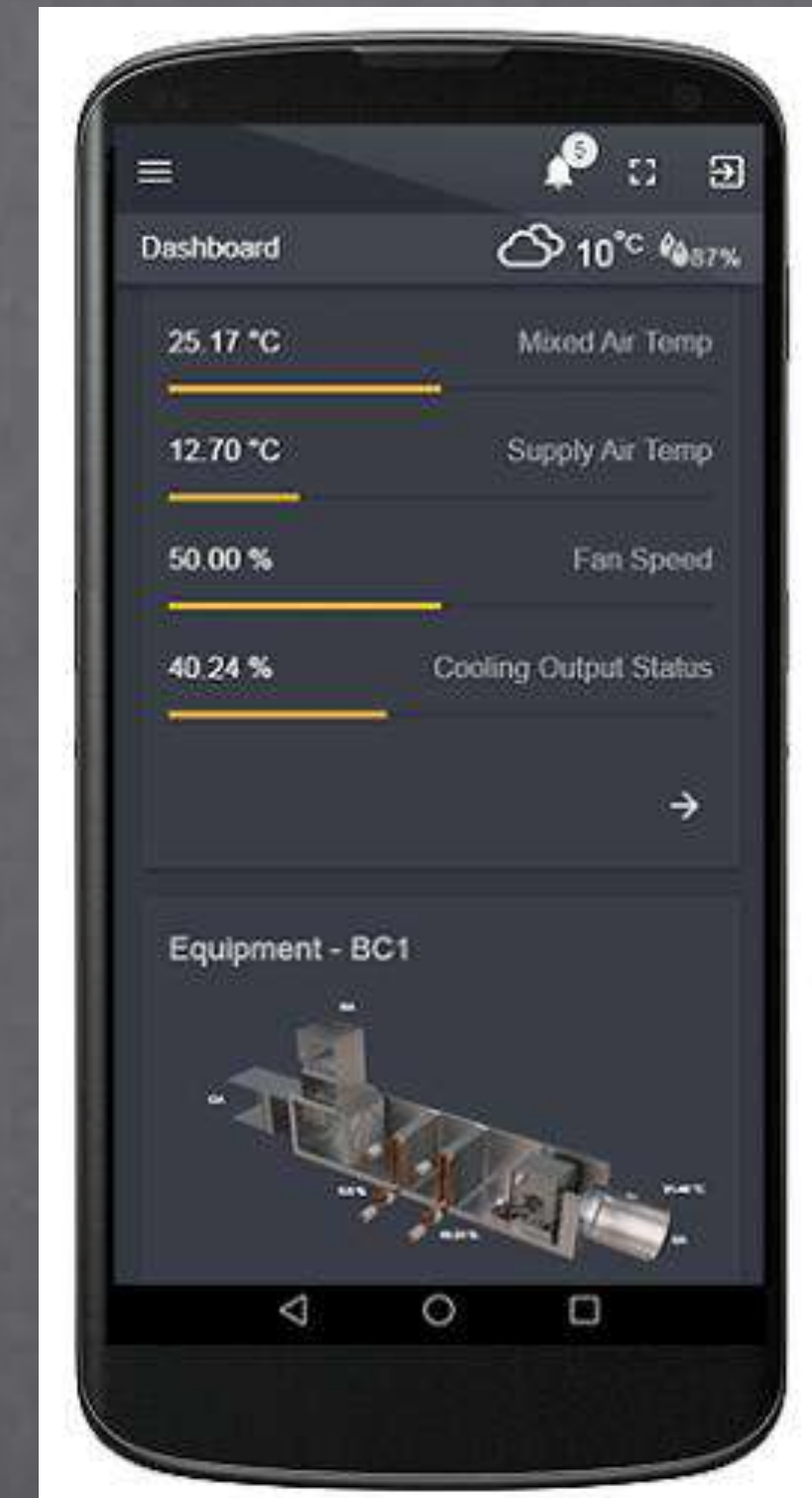


HONEYWELL WEBs-N4



Control
Automation
Distribution

- RESPONSIVE DASHBOARDS

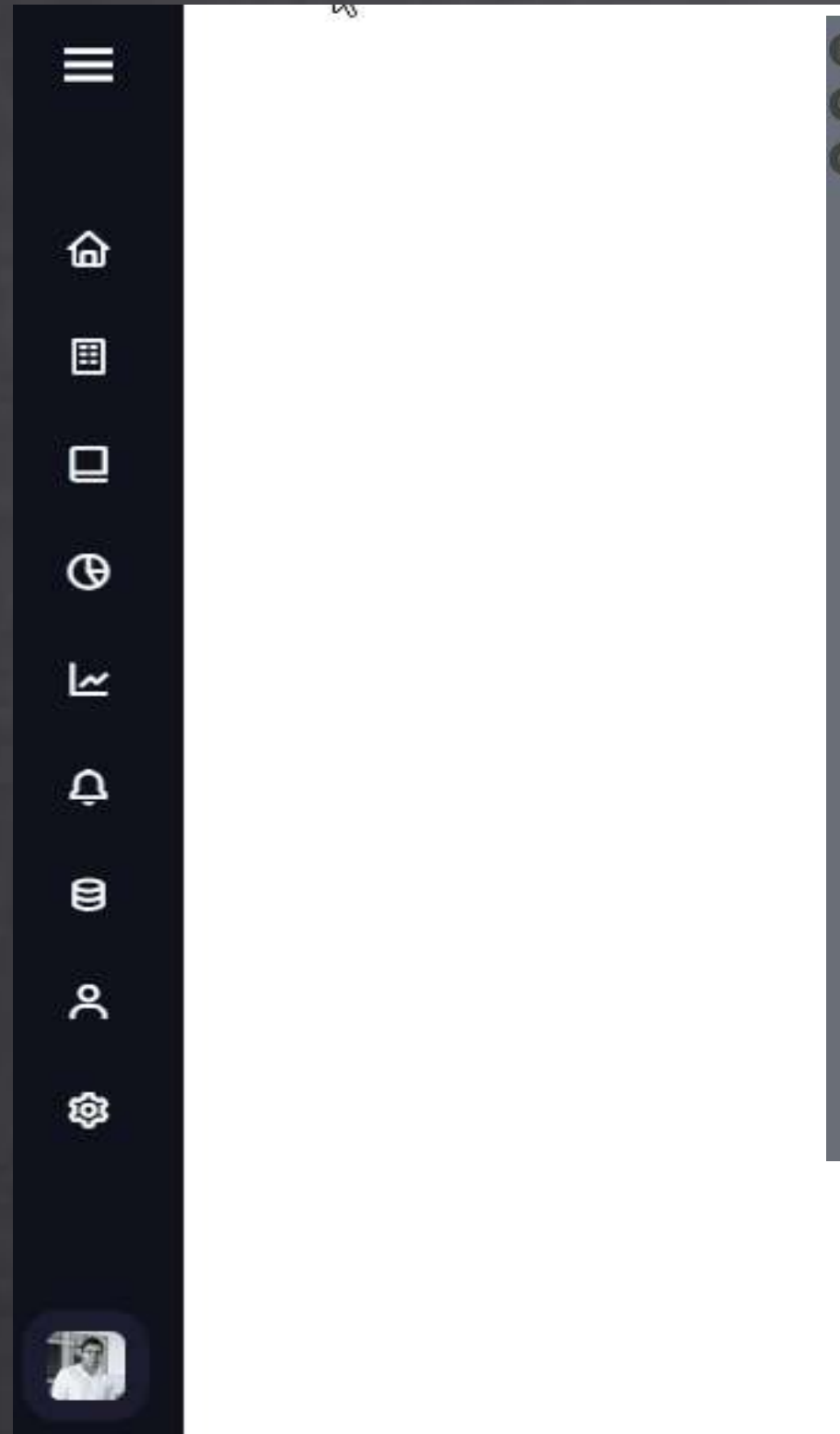


Honeywell



HONEYWELL WEBs-N4

- NAVIGATION MENU



HxPx View



37.7 °C
39 %RH

No 6, Street 3, VSIP 1 Industrial Park, Thuan An, Binh Duong

AC SYSTEM

Home Alarm History Logoff User Log

Fire Alarm OFF

02-Apr-21 2:37 PM ICT Logged In As admin

[GROUP 13 >](#)

ROOM LOCATION	ROOM STATITICS			ROOM PARTICLE				EQUIPMENT STATITICS						
	Room Temp.	Room Humid.	Room Pressure	5 um	1 um	0.5 um	0.3 um	Status	Trip	INV	Clg Valve	TED	DPE	GROUP NAME
MANUFACTURE RM 1-1	21.7 °C	56 %RH	46 Pa	0	0	0	0	On	Normal	39 Hz	0 %	22.1 °C	178 Pa	GROUP 1
MANUFACTURE RM 1-2	22.1 °C	56 %RH	46 Pa	0	0	0	0	On	Normal	42 Hz	23 %	21.2 °C	121 Pa	GROUP 1
MANUFACTURE RM 2-1	22.6 °C	53 %RH	86 Pa	0	0	0	0	On	Normal	34 Hz	11 %	21.3 °C	175 Pa	GROUP 2
MANUFACTURE RM 2-2	22.6 °C	55 %RH	62 Pa	0	0	0	0	On	Normal	33 Hz	14 %	21.9 °C	85 Pa	GROUP 3
MANUFACTURE RM 2-3	22.1 °C	55 %RH	35 Pa	0	0	0	0	On	Normal	49 Hz	23 %	21.9 °C	80 Pa	GROUP 4
MANUFACTURE RM 2-4	22.7 °C	52 %RH	15 Pa	0	0	0	0	On	Normal	45 Hz	22 %	22.5 °C	60 Pa	GROUP 5
MANUFACTURE RM 3	20.2 °C	63 %RH	24 Pa					On	Normal	30 Hz	35 %	13.4 °C	327 Pa	GROUP 6
QUALITY LABORATORY	21.4 °C	53 %RH	5 Pa					On	Normal	39 Hz	17 %	21.3 °C	19 Pa	GROUP 7
MANUFACTURE RM 4-1	20.1 °C	61 %RH	17 Pa					On	Normal	30 Hz	46 %	13.5 °C	295 Pa	GROUP 8
MANUFACTURE RM 4-2	20.3 °C	63 %RH	13 Pa											
MANUFACTURE RM 5-1	23.0 °C	54 %RH	102 Pa	0	0	0	0	On	Normal	44 Hz	31 %	20.2 °C	300 Pa	GROUP 9
MANUFACTURE RM 5-2	21.4 °C	54 %RH	82 Pa	0	0	2	10	On	Normal	45 Hz	25 %	20.0 °C	188 Pa	GROUP 10

• FLOOR PLAN TIME LAPS REPLAY

The screenshot displays the Honeywell WEBS-N4 interface. The top navigation bar includes a menu icon, the 'Dashboard' title, weather information (19.15°C, 82% humidity, London, GB), a search bar, and the current time (4:18:36 pm) with a notification badge for 61 alerts. The left sidebar contains a navigation menu with options: Home, Alarms, NiagaraNetwork, Graphics, AHUs, Floor Plans, and Schedules. Under 'Floor Plans', the '11th Floor' is selected. The main content area shows a 3D perspective view of the 11th floor plan. A timeline at the top of the floor plan is set to 'TODAY'. The floor plan is color-coded: Office 1 is red, Office 2, Office 3, Office 4, Office 9, and the Landing are green, and the Reception area is light green. Temperature readings are displayed for each highlighted area.

Room	Temperature (°C)
Office 1	26.32
Office 2	22.50
Office 3	22.49
Office 4	22.04
Office 9	22.30
Landing	23.40
Reception	22.97

HONEYWELL WEBs-N4



Control
Automation
Distribution

- PX GRAPHIC TIME LAPS REPLAY

The screenshot displays the Honeywell Web s-N4 interface for a NiagaraNetwork. The main content area shows a 3D cutaway of an Air Handling Unit (AHU) with various sensor readings and status indicators. A time-lapse playback slider is positioned at the top of the 3D view, set to 'TODAY'. The interface includes a sidebar with navigation options and a top header with system information.

Dashboard 25.36°C 66% London, GB

Search

9:12:23 pm 58

Home Alarms NiagaraNetwork Graphics Sites Solar Equipment Schedules Lobby View Heat Pumps Degree Days Admin Only Chillers Custom Points Solar All Alarms Site Manager Equipment Settings

Drivers / NiagaraNetwork

AHU 1 - Time Playback

TODAY

-4.37 °C

Low Limit Open

Normal

57.71 °C

14.10 °C

High Duct Static Normal

23.33 °C

50.59 %

Filter Status Dirty

8.23 °C

On

92.24 %

0.53 psi

HONEYWELL WEBs-N4



Control
Automation
Distribution

- **MOBILE RESPONSIVE**

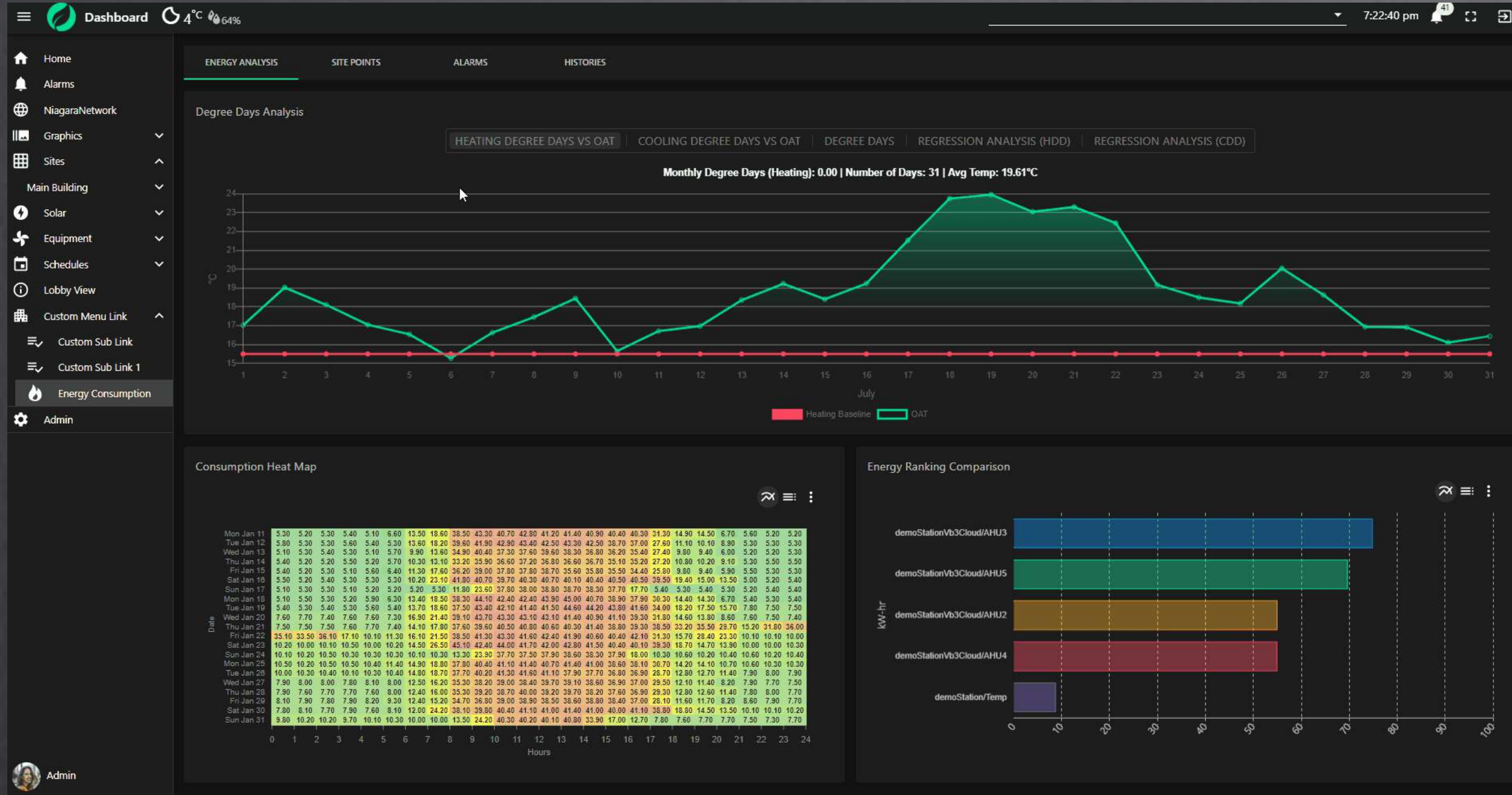


HONEYWELL WEBs-N4



Control
Automation
Distribution

- ENERGY CONSUMPTION ANALYSIS



HONEYWELL WEBS-N4



Control
Automation
Distribution

- ALARM CONSOLE

☰ CAD ☁️ 31°C 💧 66% 4:05:19 pm ⚙️ ↗️

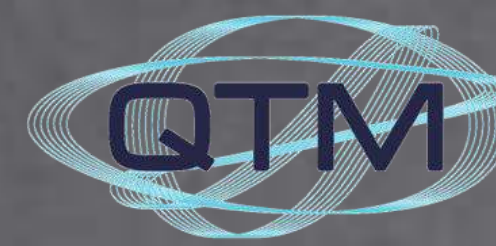
Today ▾ Unacknowledged Acknowledged Cleared 🔔 🔄

Open Alarms

- Today
- Last 24 Hours
- Yesterday
- This Week
- Last Week
- Last 7 Days
- Month-To-Date
- Last Month
- Year-To-Date
- Last Year
- Time Range

		Source State	Ack State	Source	Alarm Class	Priority	Action
Fire Alarm						3 Source(s) / 3 Alarm(s) ▾	
	02:43:01 PM	Normal	0 Acknowledged / 1 Unacknowledged	FCU_ALM	defaultAlarmClass	255	🔔
	10:46:11 AM	Offnormal	0 Acknowledged / 1 Unacknowledged	EF1-3_ALM	defaultAlarmClass	255	🔔
	09:18:52 AM	Offnormal	0 Acknowledged / 1 Unacknowledged	CP1_4_ALM	defaultAlarmClass	255	🔔

QTM PRESENCE



Control
Automation
Distribution



Romania

United Arab Emirates (HQ)

Thailand

Saudi Arabia (Local Agent)

Philippines

Australia

Established 2012 in Dubai, United Arab Emirates, QTM operates as an Energy-as-a-Service (EaaS) enterprise, that delivers substantial energy efficiency gains within the building sector. With over 200 implemented projects that spans over a decade, QTM is a reliable collaborator with major real estate brands across the Middle East, Australia and Romania for delivering financial savings on utility costs.



Control
Automation
Distribution

QTM GROUP OF COMPANIES



QTM Energy Services Pty Ltd

- Formerly Strathconon Pty Ltd, established in 1996, Australia.
- Office in Tasmania
- Specialises in Oil & Gas project management and engineering related services



QTM Energy Pty Ltd

- Established in 2021, Australia
- Office in Brisbane
- Provides Energy-as-a-Service and project financing for building energy efficiency and renewable energy plants



QTM Energy Services S.R.L

- Established in 2021, Romania
- Office in Constanta
- Provides Energy Performance Contracting for building energy efficiency



QTM Energy Co Ltd

- Established in 2023, Thailand
- Office in Bangkok
- Provides Energy-as-a-Service and project financing for building energy efficiency and renewable energy plants



QTM Energy Co Ltd

- Established in 2012, United Arab Emirates
- Head office Dubai, and Abu Dhabi
- Provides Energy-as-a-Service and project financing for building energy efficiency and renewable energy plants



Control
Automation
Distribution

QTM ENERGY SYSTEMS - OIL & GAS MANAGEMENT TEAM



Graham Markham

Executive Director
QTM Energy Services Pty Ltd

1st Class Engineer of a Steam and
Motor Ship (Combined), with tanker
endorsements F.I. Mar EST, CMarEng,
CEng (UK)



Justin Markham

QTM Group Founder &
Managing Director

BEng Hons. Electrical &
Electronic Engineering



Andy Merris

QTM Group Chief
Financial Officer

Bachelor in Mathematics and
Computer Science
Chartered Accountant



Max Cochrane

Engineering Manager Oil & Gas

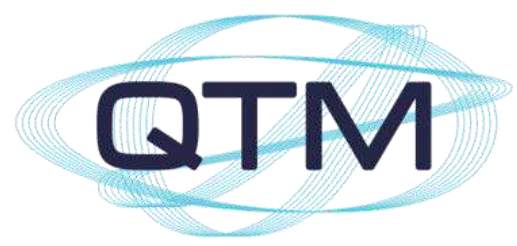
BEng Industrial Engineering



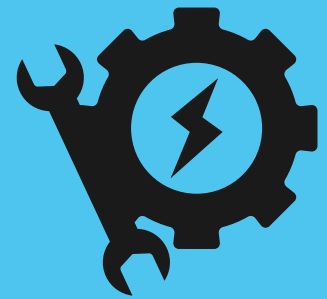
Control
Automation
Distribution

UAE CUSTOMER SINCE 2012





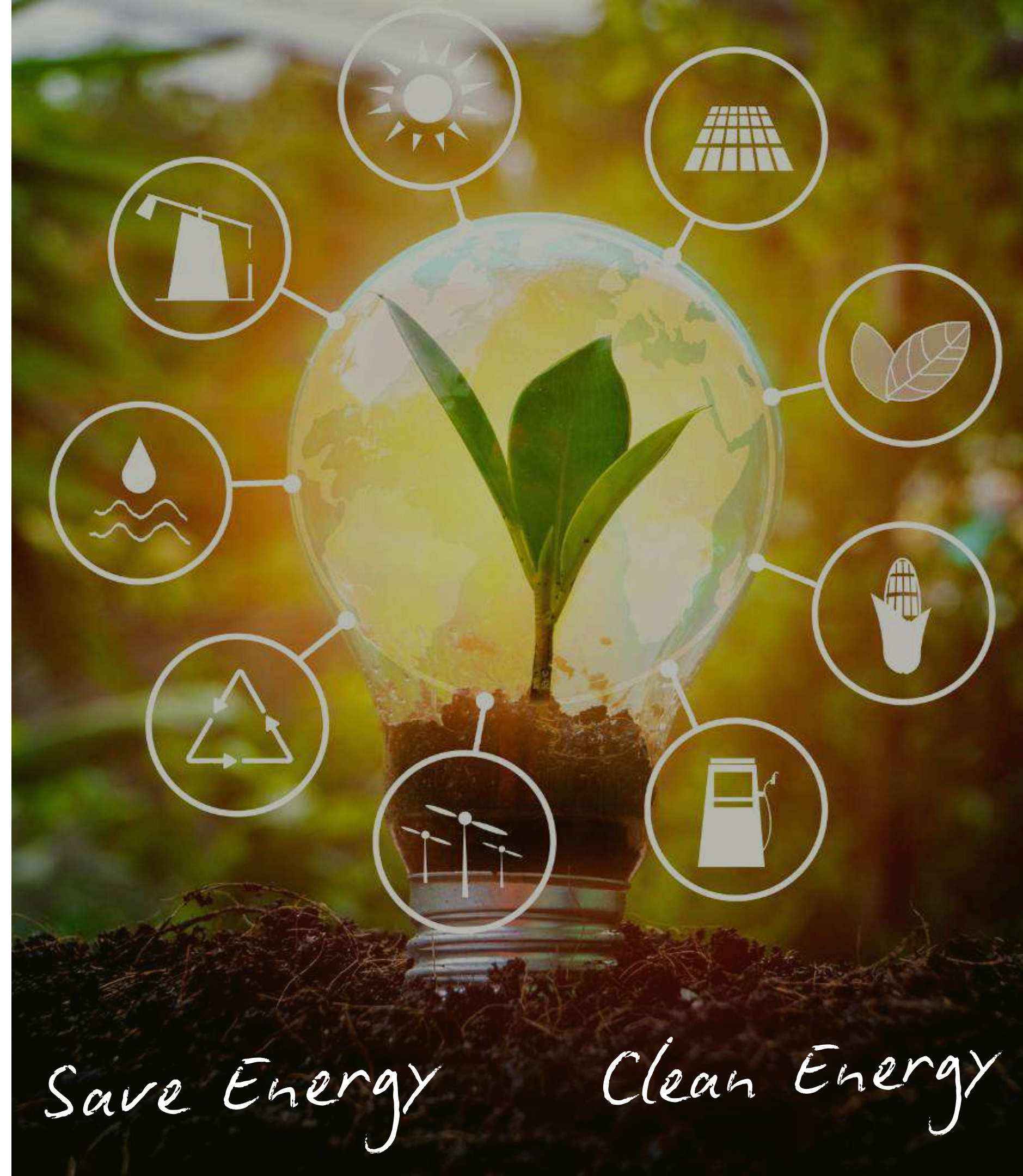
Control
Automation
Distribution



Energy – as – a - Service



**The cleanest Energy is the
energy we don't use.**



Save Energy

Clean Energy



Control
Automation
Distribution



INTRODUCTION OVERVIEW

Energy – as – a – Service (EAAS) is a service model, instead of having to invest, operate and maintain energy systems themselves, Investors can use solutions and services provided in the form of subscriptions or long-term contracts.

INVESTOR

CAN USE



Invest



Operate



Maintain



Subscriptions



Long-term contracts

CAD'S SERVICES AND SOLUTIONS



Control
Automation
Distribution

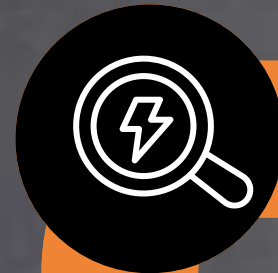


MAIN COMPONENTS OF EAAS

Energy Management

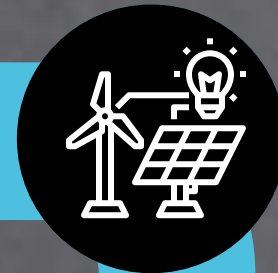
Analyze and optimize energy usage.

1



EAAS

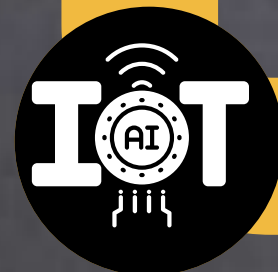
2



Renewable Energy Infrastructure

Invest in renewable energy solutions.
Help customers access clean energy without upfront investments..

4



Smart Technology

Apply IoT, AI, and big data for efficient energy management

3

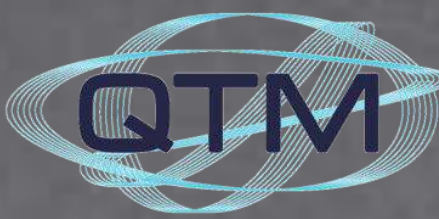


Operation and Maintenance Services



Control
Automation
Distribution

INTRODUCTION OVERVIEW



From 2024, CAD has partnered with QTM Group to provide energy services to customers in Vietnam. Our services include:

1. INVESTMENT IN RENEWABLE ENERGY SYSTEMS

- Wind power systems
- Solar power systems
- Energy storage systems



2. INVESTMENT IN TECHNOLOGY AND OPERATIONS TO IMPROVE ENERGY EFFICIENCY

- Energy optimization for HVAC systems
- Utilizing the **BRANE SYSTEM** software platform to collect and analyze energy data, ensuring optimal system performance and enhanced energy efficiency.





Control
Automation
Distribution

EAAS MODEL

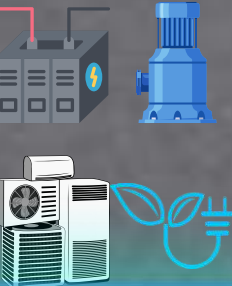


PROJECT FINANCE



Funding to generate renewable energy

Funding to invest in technology upgrades and reduce consumption



Investment in Renewable Energy Plants
(unlocked by client signing QTM Power Purchase Agreement)

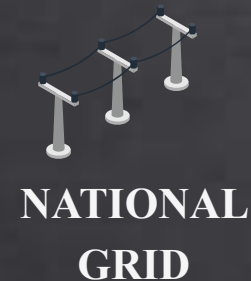
Investment in New Efficient Technology & Operations
(unlocked by client signing shared savings agreement)

RENEWABLE PLANT

- Zero investment from customer
- Target 30% energy from purpose-built source
- Fixed tariff for 10–15 years
- Pay less for electricity and achieve net zero

SELLS carbon credits to off-set 100% of customers electricity consumption at a discount to market rates.

SELLS 30% to 95% of customer electricity consumption as "Renewable Electricity"



ELECTRICITY RETAILER
Sells renewable electricity at a discount

CUSTOMER

PROGRAM DELIVERABLES

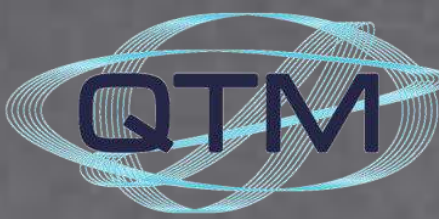
- Achieve net zero
- Reduce operating costs
- Cutting-edge energy management technology
- Increase asset value
- Zero investment

ENERGY EFFICIENT PLANT CONSUMPTION

- Reduce consumption by at least 15%
- Shared energy savingsIncreased asset value
 - Improved indoor air quality

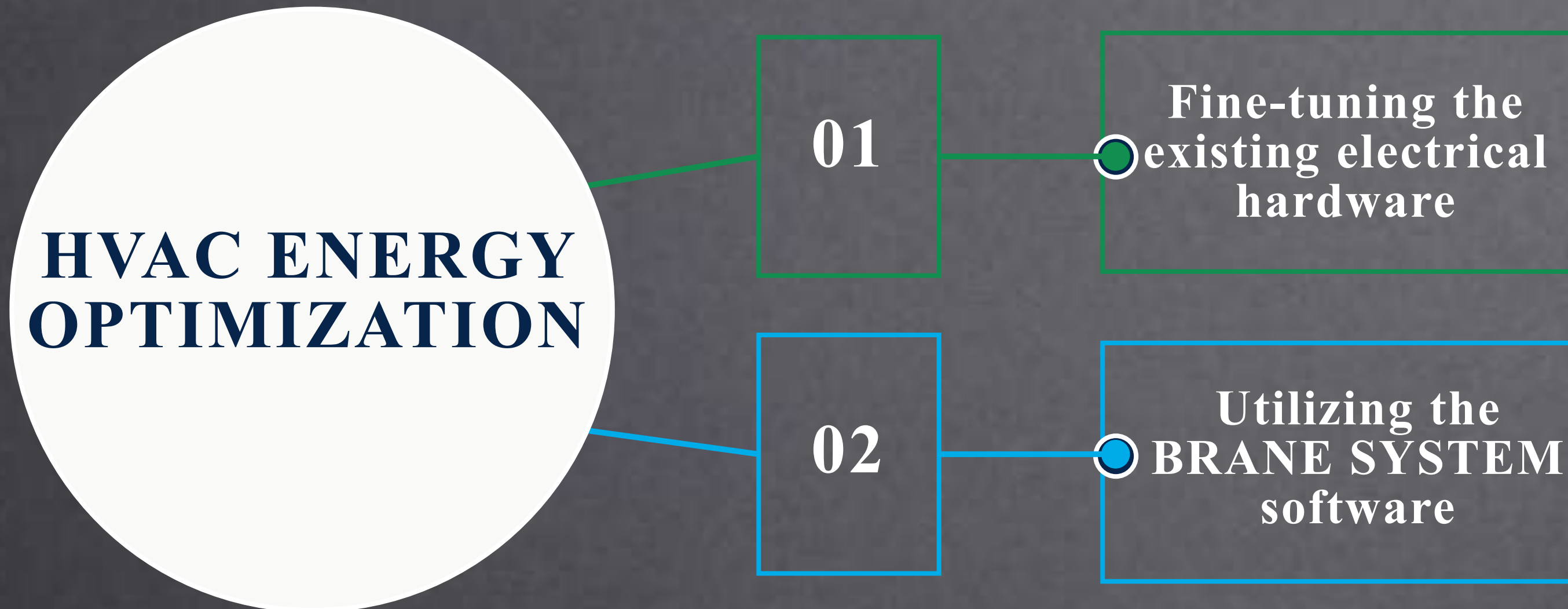


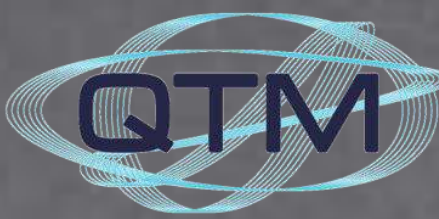
Manage energy consumption via proprietary **BRANE SYSTEM** that **INVOICES** customer fixed % share of reduced operating costs



ENERGY OPTIMIZATION TECHNOLOGY

To optimize energy consumption in HVAC systems, CAD utilizes the **BRAIN SYSTEM** software technology from QTM Group, combined with fine-tuning of the existing electrical hardware to maximize energy efficiency.





Fine-Tuning the Existing Electrical Hardware

- Use variable frequency drives for pumps, chillers, cooling tower fans, AHUs, and FCUs.
- Install additional sensors to monitor air quality, enabling suitable temperature and humidity adjustments.
- Add certain devices to improve the **COP** of the chiller system.

Utilizing the BRANE SYSTEM Software

- Integrate the energy management platform **Insight Report**[@] to monitor and evaluate energy efficiency in the system.
- Use AI algorithms and large data sets to improve the COP of chillers, AHUs, and FCUs.
- Integrate the **Workflow Management** platform to optimize operations and system management.
- Provide an intuitive interface to minimize labor in operations and maintenance.



Control
Automation
Distribution



ENERGY OPTIMIZATION TECHNOLOGY

The **BRAIN SYSTEM** software platform is web-based. It is installed to collect, monitor, and analyze all energy-related data. It leverages AI algorithms and big data to optimize operational processes, helping save energy.

PORTFOLIO DASHBOARD



ENERGY ANALYSIS AND MONITORING



AUTOMATION & CONTROL "BMS"





Control
Automation
Distribution

INVESTMENT MODEL



CAD and QTM Group give customers 2 investment model: **SHARED SAVINGS MODEL** or **GUARANTEED SAVINGS MODEL**

1. SHARED SAVINGS MODEL

- All investment costs for solutions and equipment are covered by CAD and QTM Group.
- CAD and QTM Group are responsible for managing operations and controlling energy consumption.
- Profits from energy savings are shared according to a predefined ratio, distributed over 5 or 7 years.
- The profit share received by CAD and QTM Group from energy savings typically ranges between 30–70%, depending on the project.

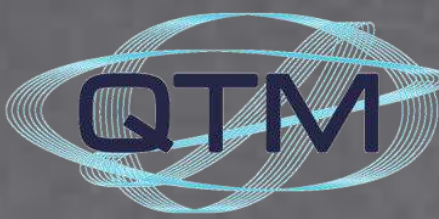
ESCO: Energy Service Company (CAD and QTM Group)





Control
Automation
Distribution

INVESTMENT MODEL

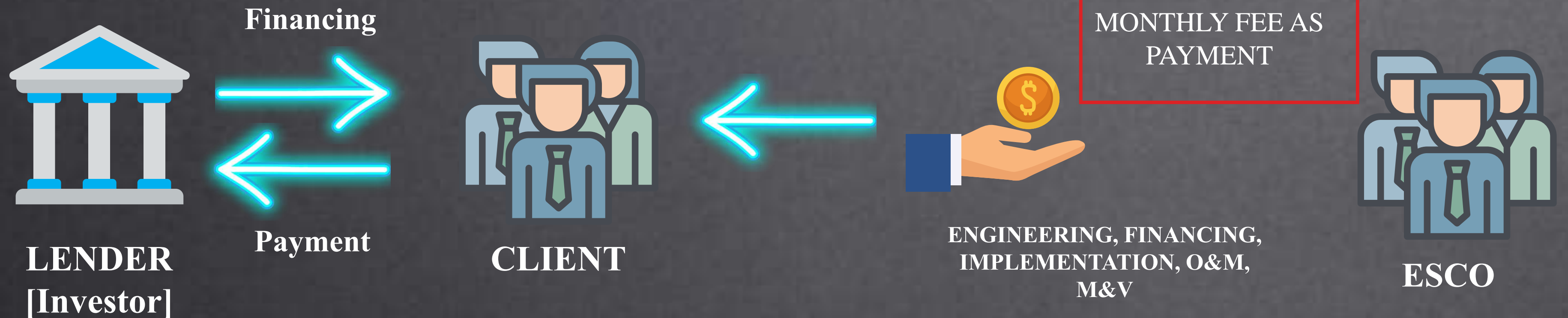


CAD and QTM Group give customers 2 investment model: **SHARED SAVINGS MODEL** or **GUARANTEED SAVINGS MODEL**

2. GUARANTEED SAVINGS MODEL

- The customer covers all investment costs.
- CAD and QTM Group guarantee a fixed level of energy savings based on electricity bills and assume all technical risks.
- If actual savings fall short of the guaranteed level, CAD and QTM Group will compensate for the shortfall.
- If actual savings exceed the guaranteed level, the customer pays the excess amount to CAD and QTM Group.

ESCO: Energy Service Company (CAD and QTM Group)





Control
Automation
Distribution

PROJECT STAGE



1

- Request for Information (RFI)
- Initial site Walk Through
- Baseline Formation
- Preliminary Proposal

2

- Techno-commercial review
- Contract Agreement

3

- Baseline & M&V Plan Finalization
- Procurement Installation and Hand-over

4

- Performance period
- Energy Engineering Service





Control
Automation
Distribution

PROJECT REFERENCE



WORLD TRADE CENTRE RESIDENCE



WORLD TRADE CENTRE RESIDENCE

SHARED ENERGY SAVINGS CONTRACT
Ph1 CONTRACT PERIOD | 2014 TO 2020
PH2 CONTRACT PERIOD | 2019 TO 2024



SAVINGS SUMMARY

(DEC 2014 – AUG 2020)

19.7%

AED 6.7million

MWh 27,738

ENERGY CONSERVATION MEASURES



BUILDING MANAGEMENT SYSTEM UPGRADE for CONTROL of key HVAC equipment

Retrofit **EC FAN MOTORS INSTALLATION**



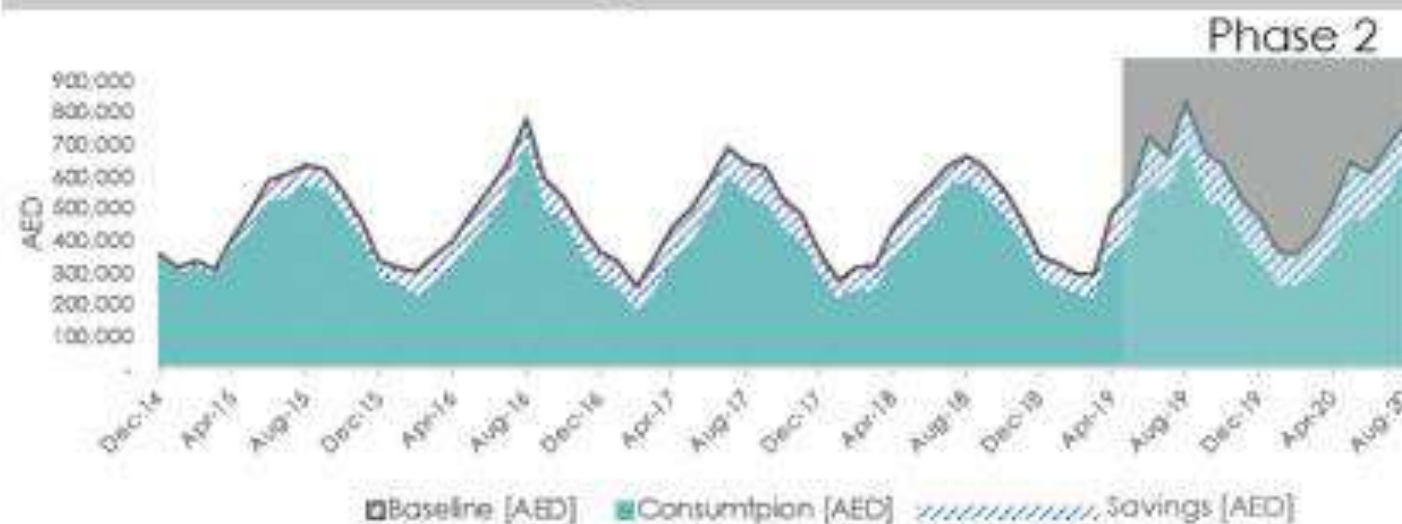
Retrofit **DEMAND CONTROL VENTILATION** (Dynamic Approach per ASHREA Std 62.1-2016)

ENHANCED INDOOR AIR QUALITY



AUTOMATION AND CONTROL UPGRADES

Savings Performance



ENVIRONMENTAL IMPACT



5.6M kg
Carbon Emissions Reduction

Equivalent to

1,218 cars driven for one year

634,227 gallons of petrol consumed

719 million smartphones charged

650 homes' energy use for one year



Control
Automation
Distribution

PROJECT REFERENCE



ELITE RESIDENCE

MEP AWARDS 2019
HIGHLY COMMENDED
RETROFIT PROJECT
OF THE YEAR



ELITE RESIDENCE
SHARED ENERGY SAVINGS
CONTRACT PERIOD | 5 YEARS | 2018 TO 2023

SAVINGS SUMMARY

(AUG 2018 - SEP 2020)

29.6%

AED 4.02million

MWh 9,025



ENERGY CONSERVATION MEASURES



BUILDING MANAGEMENT SYSTEM
for AUTOMATED OPERATION and CONTROL of key HVAC equipment

Mitigation of humidity condition by
DEWPOINT APPROACH
(Mandatory by ASHREA Std 62.1-2019)



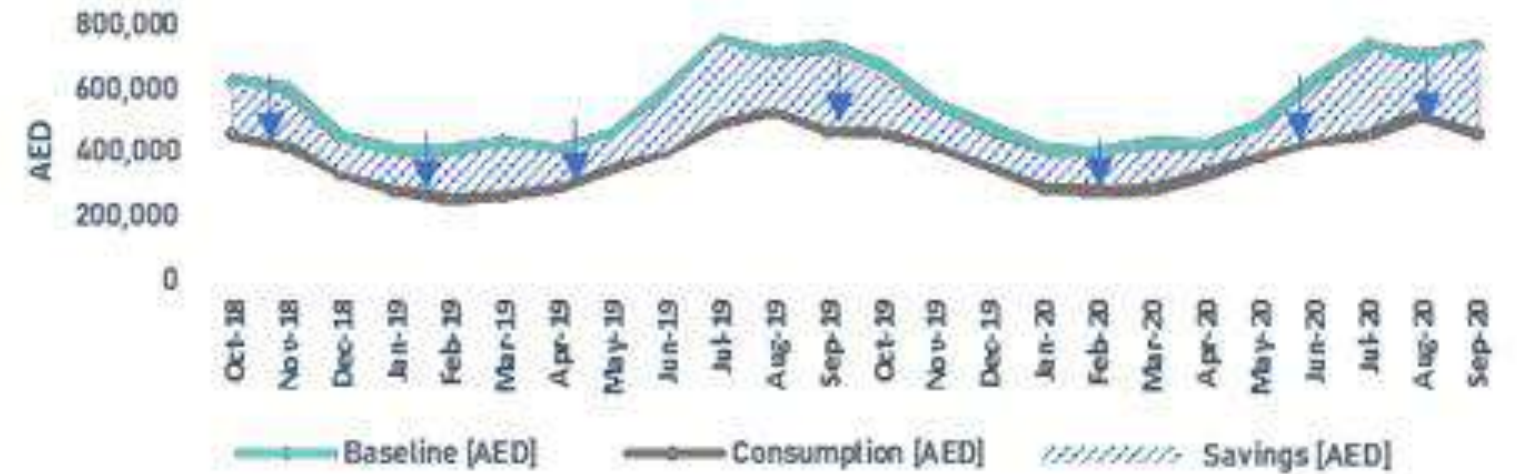
Retrofit **DEMAND CONTROL VENTILATION**
(Dynamic Approach per ASHRAE Std 62.1-2016)

COOLING TOWER VFD OPTIMIZATION
(Dynamic APPROACH Control method)



Installation of VFDs for Secondary Chilled Water Pumps and FAHUs

SAVINGS PERFORMANCE



ENVIRONMENTAL IMPACT



4.5M kg
Carbon Emissions Reduction

Equivalent to

963
cars driven
for one year



501,437
gallons of
petrol consumed



568 million
smartphones
charged



514 homes
energy use
for one year



Source: <https://www.epa.gov/energy/greenhouse-gas-equivalencies-calculator>



Control
Automation
Distribution

PROJECT REFERENCE



JUMEIRAH CREEKSIDE HOTEL & THE AVIATION CLUB



JUMEIRAH CREEKSIDE HOTEL & THE AVIATION CLUB

SHARED ENERGY SAVINGS
CONTRACT PERIOD | 6 YEARS | 2017 TO 2023



SAVINGS SUMMARY

(SEP 2017 – SEP 2020)

23.8%

AED 3.6million

MWh 8,150

ENERGY CONSERVATION MEASURES



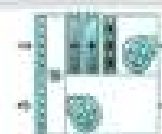
BUILDING MANAGEMENT SYSTEM UPGRADE for CONTROL of key HVAC equipment

Retrofit **DEMAND CONTROL VENTILATION** (Dynamic Approach per ASHREA Std 62.1-2016)



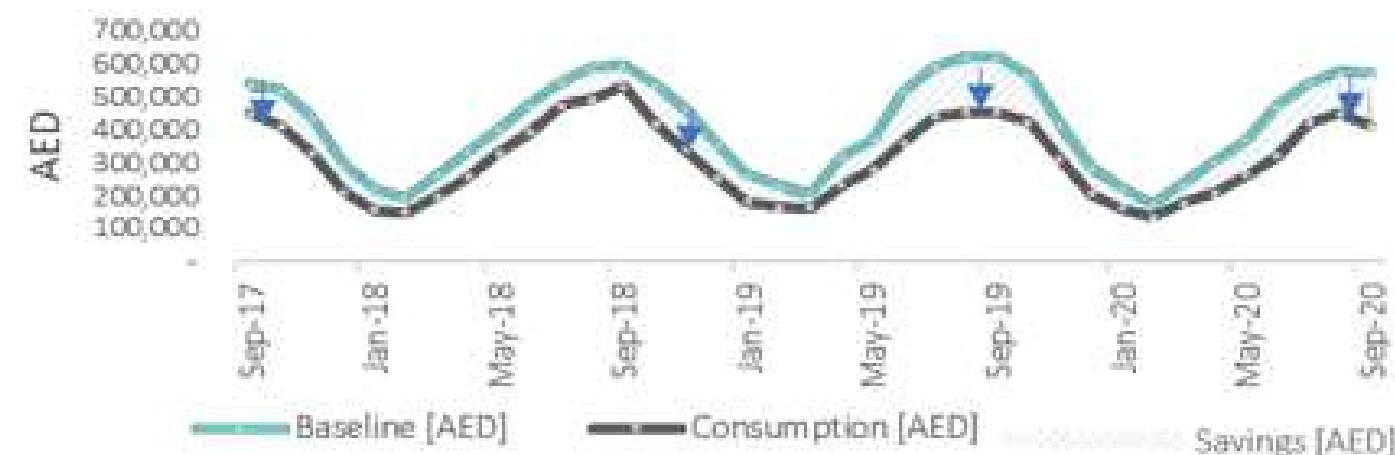
CHILLER OPTIMIZATION (COP IMPROVEMENT)

AUTOMATION AND CONTROL UPGRADES



BRANE SYSTEM AND MEASUREMENT & VERIFICATION

SAVINGS PERFORMANCE



ENVIRONMENTAL IMPACT



3.9million kg
Carbon Emissions Reduction

Equivalent to

880
cars driven
for one year



458,530
gallons of
petrol consumed



520 million
smartphones
charged



470 homes*
energy use
for one year

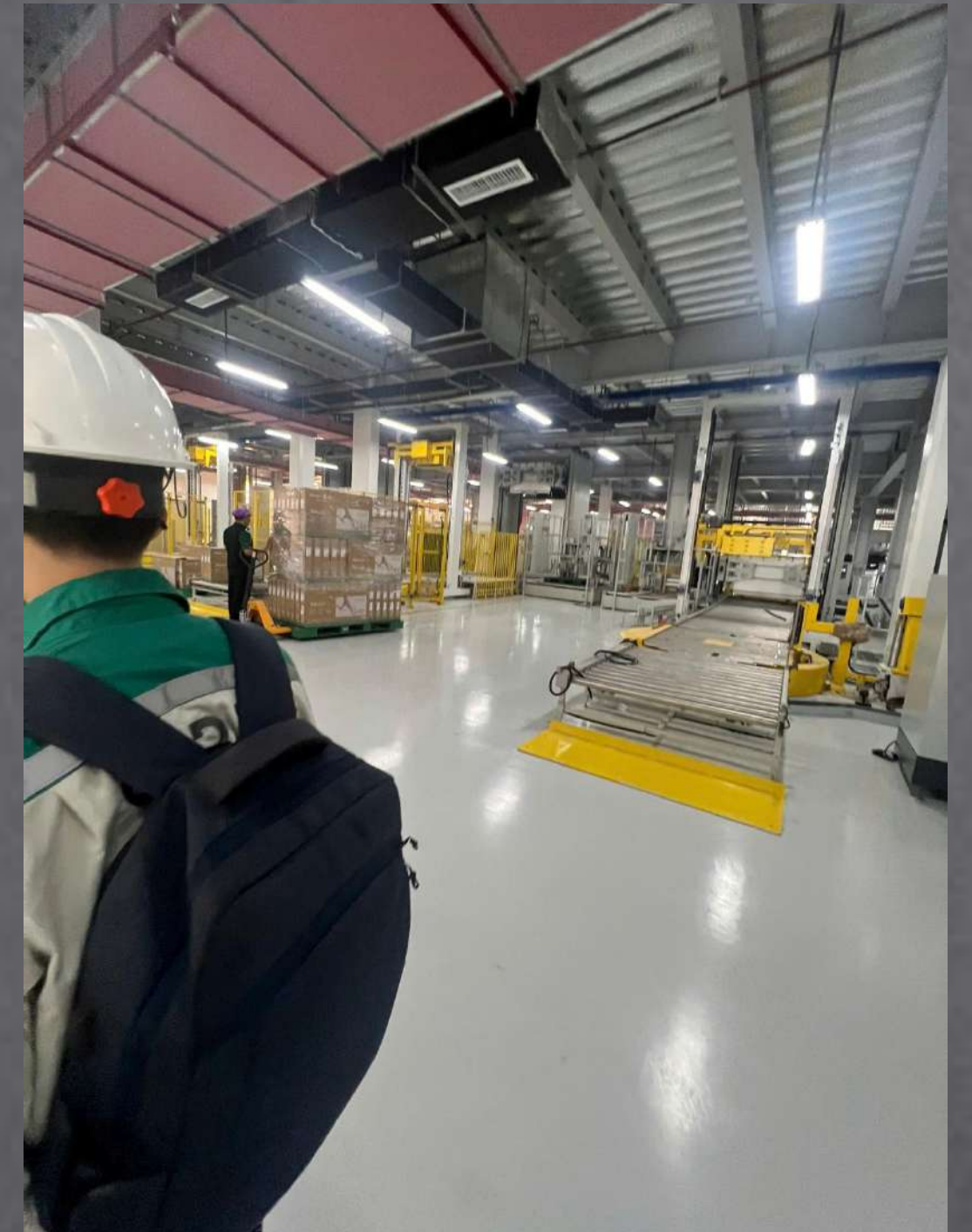


*Based on average energy consumption of a household in the UAE.



Control
Automation
Distribution

PROJECT REFERENCE



SUPPLIED THE BMS SYSTEM FOR REGZA ELECTRONIC FACTORY – LONG THANH – DONG NAI - 2024



Control
Automation
Distribution

PROJECT REFERENCE

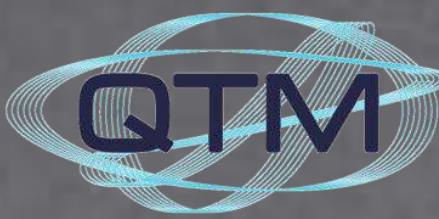


SUPPLIED THE BMS SYSTEM FOR CGMC – COMMERCIAL GAMBLING MANAGEMENT COMMISSION OF CAMBODIA - 2024



Control
Automation
Distribution

PROJECT REFERENCE



SUPPLIED THE BMS SYSTEM FOR NATIONAL SOCIAL SECURITY FUND – CAMBODIA - 2023



Control
Automation
Distribution



QTM GROUP CERTIFICATIONS AND AWARDS

QTM has an edge in using the best industry practices when conducting energy audits due to the following certifications:



**MEP Awards - Retrofit Project of the Year
Winner 2018**
Jumeirah Creekside Hotel



**MEP Awards - Retrofit Project of the Year
Highly Commended 2019**
Elite Residence

شمس دبي
Shams Dubai



**MEP Awards - Retrofit Project of the Year
Highly Commended 2020**
World Trade Center Residence Phase II

جمعية المهندسين
society of engineers



**Climate Control Awards – Paradigm Shift
Agent of the Year
Winner 2015**

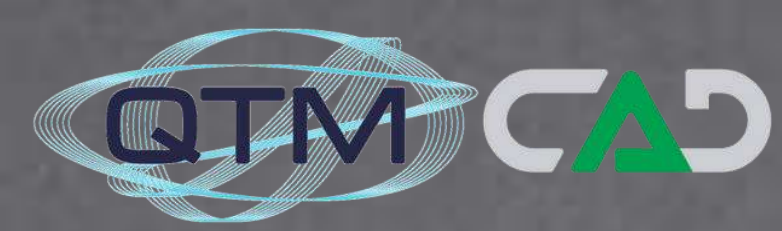


هيئة كهرباء ومياه دبي
Dubai Electricity & Water Authority



**WETEX – Shams Dubai Award
Winner 2016 (Won by Jumeirah Group)**
First Dubai Shams Solar PV Installation

CAD's SITE SERVICE TEAM



Control
Automation
Distribution



DELIVERING THE BEST CUSTOMIZED SOLUTIONS

CAD's SITE SERVICE TEAM

❖ Electric control Automation, BMS-HVAC System

- Solutions for programming and controlling chiller systems
- BMS solution
- Energy monitoring solution
- RCU solution (Room Control Unit)
- Control the HVAC system



❖ Gas detectors: On-site calibration & Repair

- Inspection
- Repair (if needed)
- Calibration
- Cleaning, and certification
- Any needed parts are additional.



❖ Thermal Field: Ensuring Burner efficiency



- Inspecting and cleaning igniter, mixing cone, electrodes, and other components
- Checking the flame detector, pressure in main gas, safety control, leakage of shut-off valves
- Adjust low fire and high fire mode
- Adjust fuel - air ratio
- Enhancing burner efficiency
- Measuring O2 levels and exhaust temperatures
- Checking start-up burner operation
- Minimizing air leakage to ensure optimal combustion
- Performing a combustion efficiency test and making follow-up adjustments as needed

CAD SUPPLY WORKSHOP

Integrated Control Panel, FAT the System



Address: Located in Lot B2, Road 3rd, Tan Dong Hiep B Industrial Zone, Binh Duong province. Vietnam

Facilities: 6,000m², equipped with CNC Milling-machine, CNC punching, Multipurpose, Latching, Cutting, Drilling, Welding machine, Bus-bar processing machine , 3in1, Tester...

ELECTRICAL CABINET

- **MOTOR CONTROL CABINET (MCC PANEL)**



ELECTRICAL CABINET

- **PLC PANEL**



ELECTRICAL CABINET

- **DDC** PANEL



HVAC EQUIPMENT DISTRIBUTION

1. Manual valve, Air damper

- Ball valve
- Butterfly valve
- Globe valve



3. Balancing Valve

- Static balancing valve
- Dynamic balancing valve
- Pressure independent balancing valve (PICV)



5. Sensors

- Temperature sensor (Air & Water)
- Humidity sensor
- Pressure sensor
- Flow meter
- Differential pressure sensor
- BTU



2. Control Valve

- Ball valve
- Butterfly valve
- Globe valve

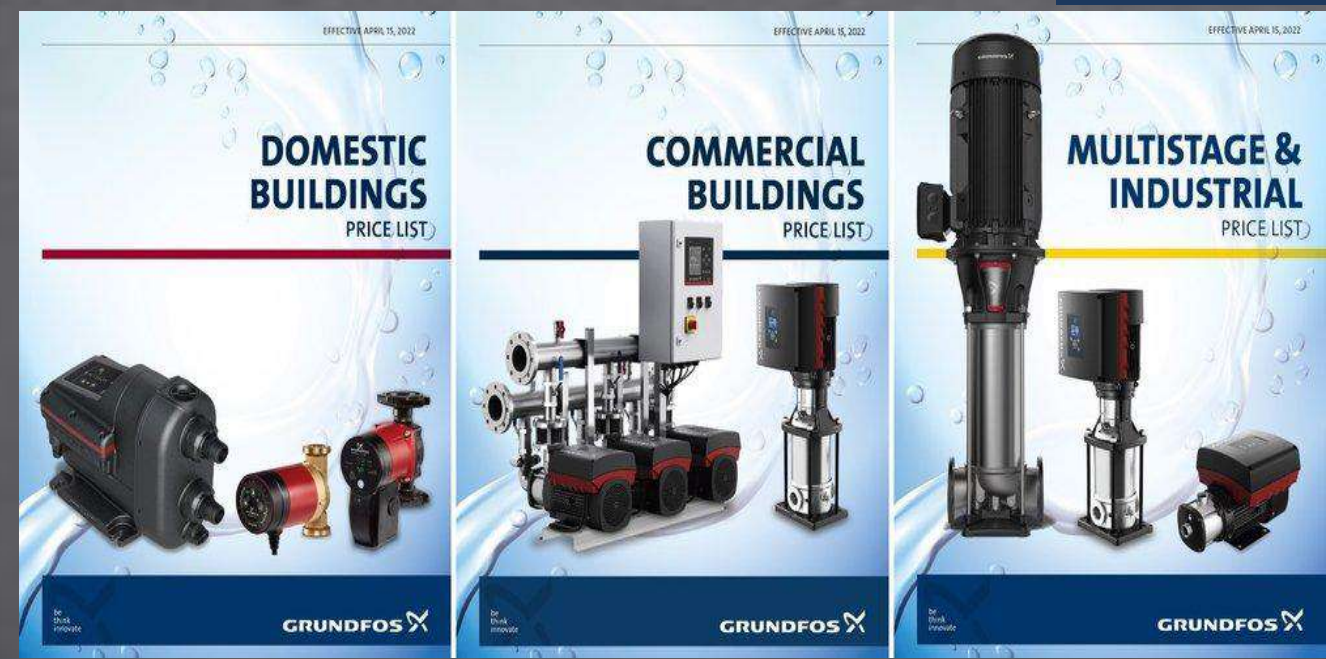


4. Controller, Control Panel

- HVAC Controller
- BMS
- RCU



6. Pumps





Control
Automation
Distribution

CONTACT US!



QTM Energy

Level 6 Anzac Square, 200 Adelaide st,
Brisbane www.qtm.energy

AUSTRALIA | ROMANIA | THAILAND |
UNITED ARAB EMIRATES

CAD'S Head Office

108/25 Cong Hoa street, Ward 4 , Tan Binh District,
Ho Chi Minh City, Vietnam.

www.cads.vn
HP: 0917414008

Ha Noi Branch

Room 1108, Floor 11, Women Association
Building,
7 Ton That Thuyet Str, Dich Vong Hau
Ward, Cau Giay District,
Ha Noi, Viet Nam.
Tel: (84-24) 60278809